

TWO-STAGE TRIGGER – V3

Installation manual



This adapter imitates the behavior of the two-stage trigger in a real gun it allows the user to know exactly when the firing will take place. This gives better accuracy and realistic shooting feel.

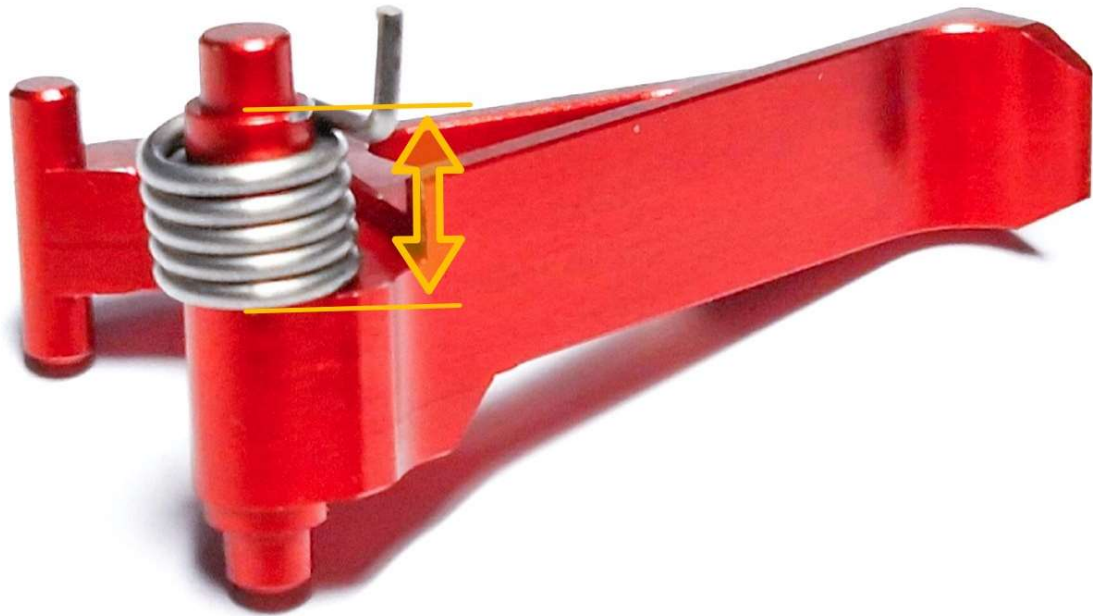
The two-stage trigger has an operating process that involves two distinct phases of firing:

- In the first stage there is smooth trigger pull until it hit the wall
- In the second stage the weight of the trigger increases to break through the wall
- “click” past the second stage initiates the shot



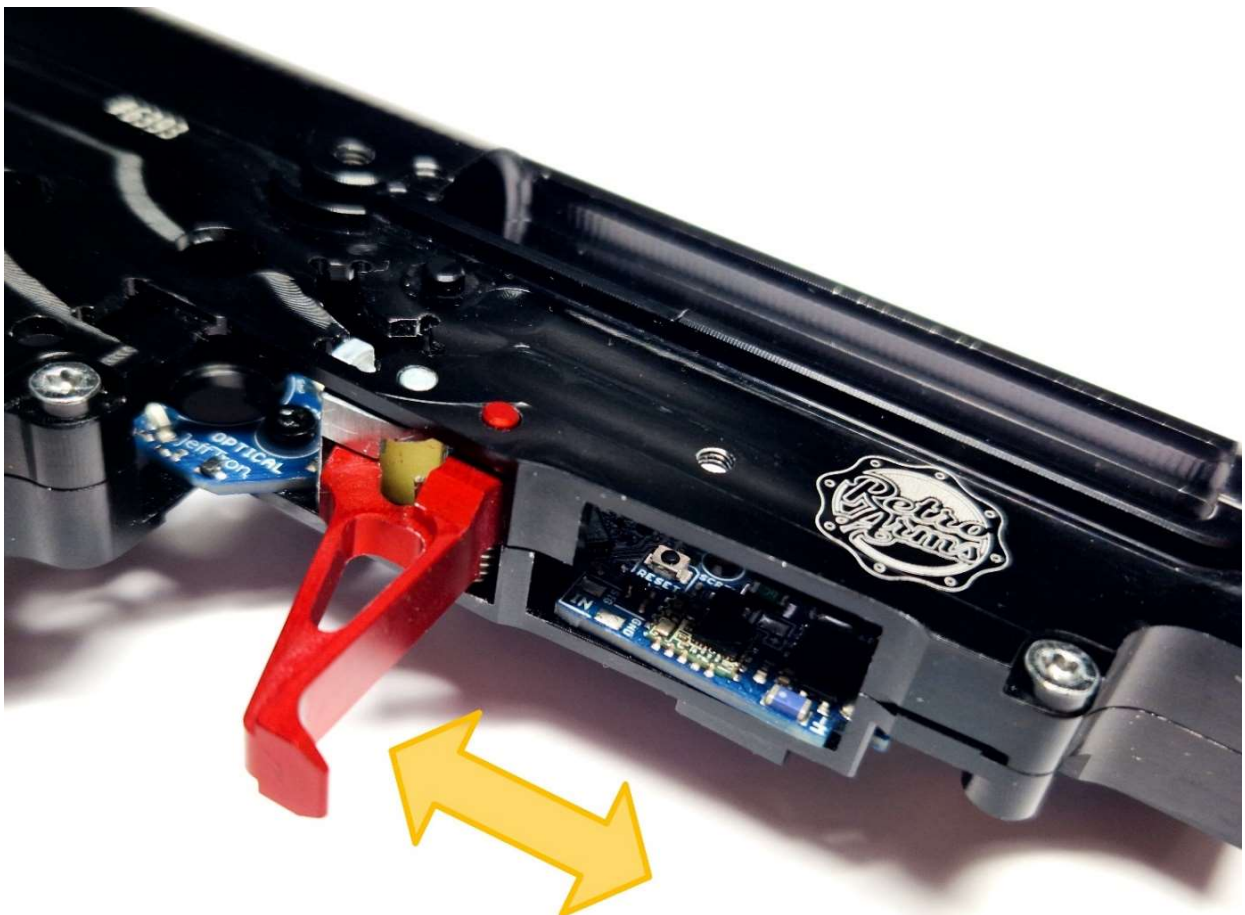
WARNING: This set is designed only for installation into a CNC gearbox - V3 from Retroarms with Leviathan-V3 optical ETU from JeffTron. For installation in other gearboxes the Two-stage trigger adapter has to be modified to their dimensions.



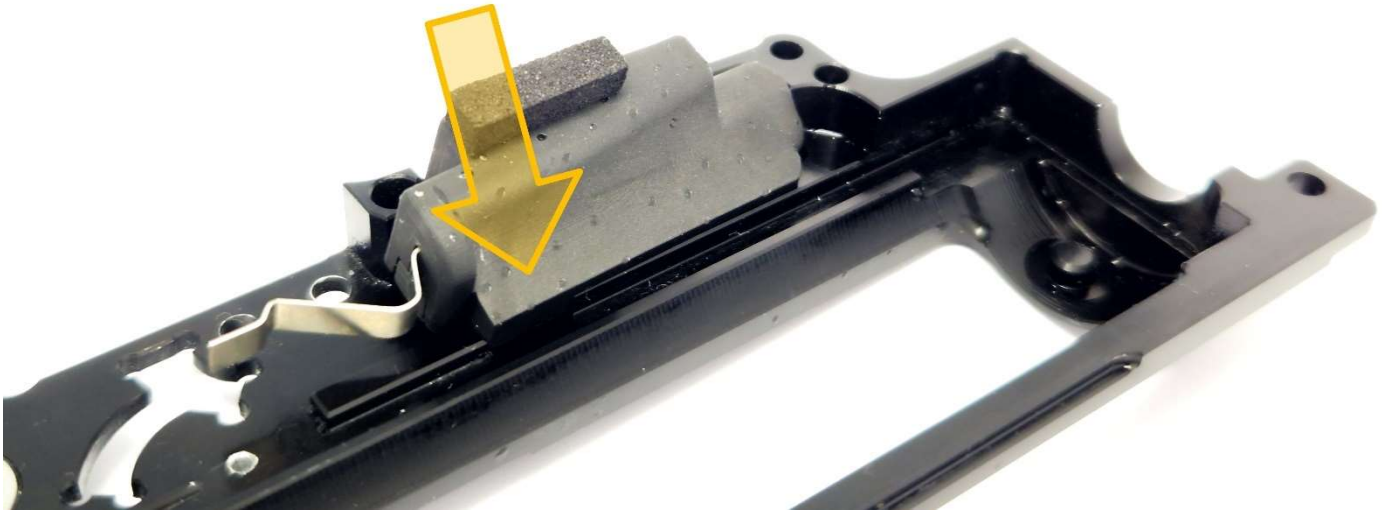


Use spring for the trigger from the package and test:

- Spring fully fits into the trigger (on the upper image), if not use different stronger trigger spring or stock trigger spring from the gun
- Trigger moves smoothly in the gearbox
- Trigger does not wobble to sides
- The first (red) trigger part does not wobble in the second (silver) part



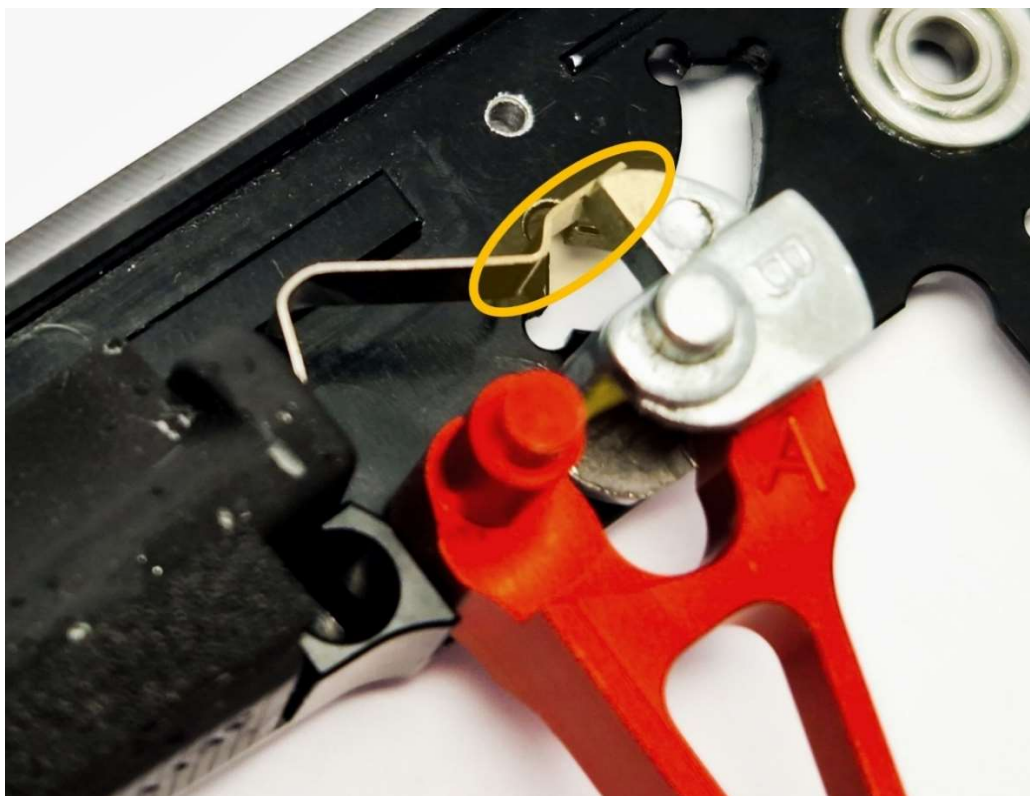
Insert two stage trigger into the RetroArms gearbox - upper part first. Then push the bottom part into the gearbox too.



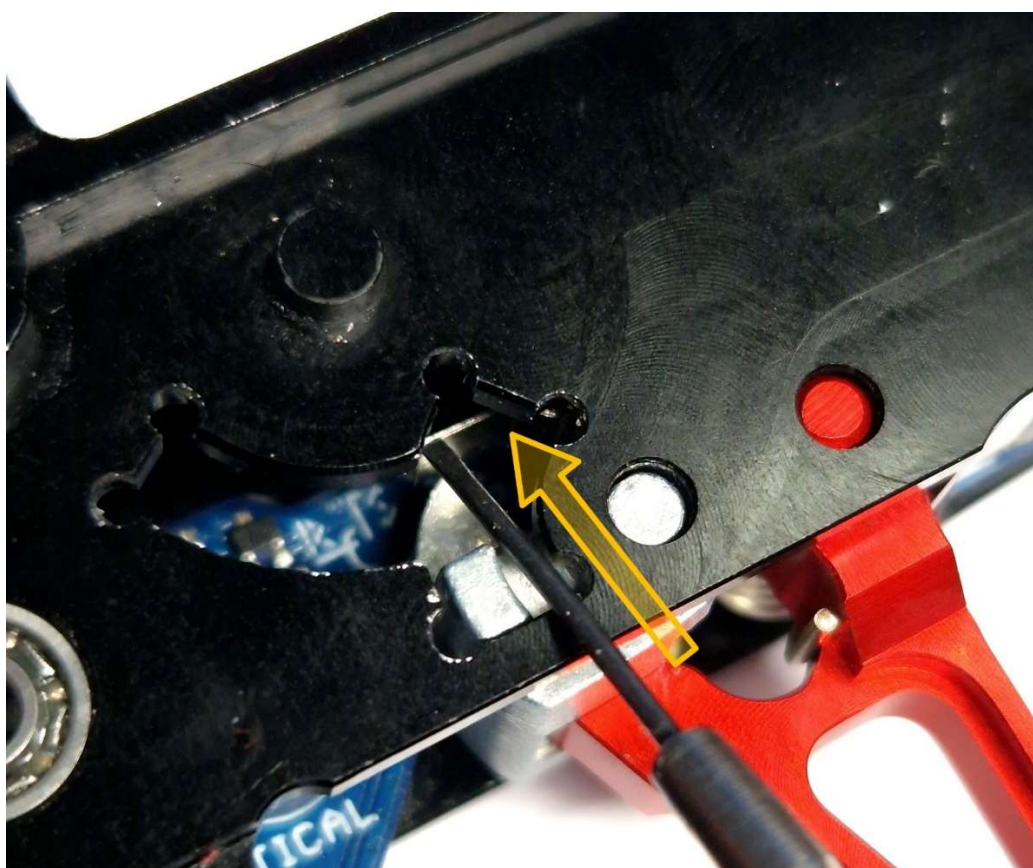
Use the screw from the package to hold it in the gearbox shell.



Lube the bottom part of the spring and trigger end with a small amount of grease. It will make smooth trigger pull.



During gearbox assembly move the two-stage trigger spring UP through the hole in the gearbox. It is because spring can be stuck on the silver part of the trigger.



Test if trigger moves as it should the two-stage trigger:

- In the first stage there is smooth trigger pull until it hit the wall
- In the second stage the weight of the trigger increases to break through the wall
- “click” past the second stage initiates the shot
- Releasing the trigger returns to the default state.

If necessary, adjust spring tension by bending it UP or DOWN by hand in place of the red circle.



Cover has to be installed by an expert. He must know how to disassemble the replica.

Warranty does not cover: water immersion, defects or damage from accident, misuse, abuse, wrong installation, bad handling, any modification by user.

Exclusion of liability: Manufacturer Ing. Filip Němec is not liable for any damages, injuries or accidents of any kind resulting from the use of this product in the airsoft gun.



www.jefftron.net