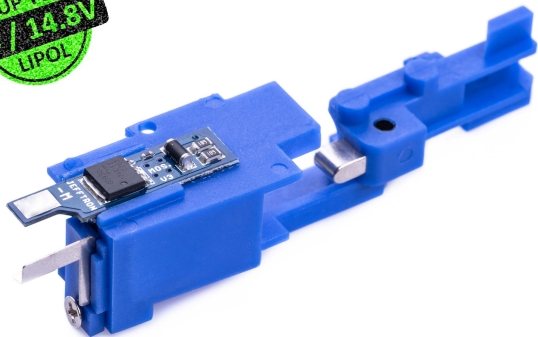


# MOSFET - V3

UP TO  
4S / 14.8V  
LIPOL



**Limitation: spring M170 (current 35A)**

This device has to install expert.  
He must know how to disassemble airsoft gun and solder.  
Never use soldering gun!

[www.jefftron.net](http://www.jefftron.net)



## How connect device into the gun

- 1) Red wire with max. 1,5 qmm lead to the battery positive and to the motor positive. Add fuse on this wire close to the battery.
- 2) Black wire with max. 1,5 qmm lead to the battery negative (-B on board), solder it on the PCB in 45° angle towards the blue wire.
- 3) Black wire with max. 1,5 qmm lead to the motor negative (-M on board).
- 4) Blue wire with max. 0,5 qmm lead anywhere on the red wire. Drag the heat-shrink tube over the soldering point to the switch body.

When you insert contacts into the gearbox, be careful the wires won't break the mosfet board. Be extra sure to connect the red and black wires appropriately, otherwise you should destroy the device, weapon or battery. Also check right function trigger and cut-off lever with plunger.

